

# Pappert, Bonhill

## New Housing Development

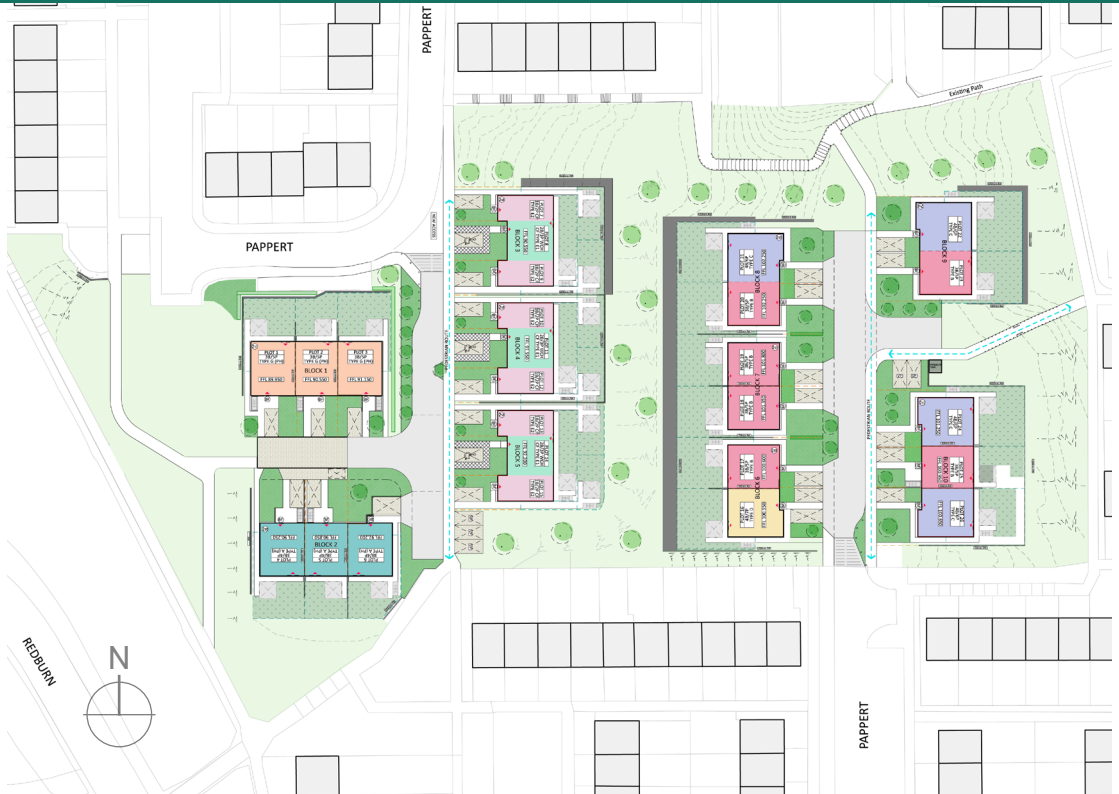


26 New, Affordable and Energy Efficient  
Homes in the Pappert Community

West   
Dunbartonshire  
COUNCIL

# SITE PLAN

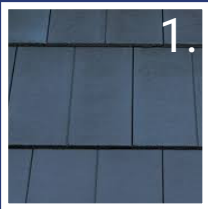
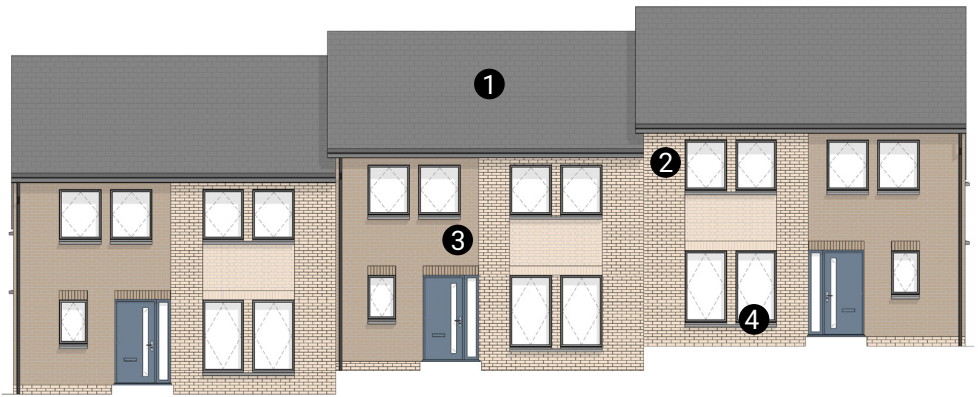
This new housing development features comfortable and environmentally friendly homes. All of the 26 new houses are designed to either Passivhaus or Net-Zero standards. A range of family homes are proposed comprising of 2-storey houses, cottage flats, and wheelchair accessible housing. The design places emphasis upon areas of open greenspace and pedestrian connections.



3-BED/5-PERSON HOUSE	3-BED/5-PERSON HOUSE	3-BED/5-PERSON HOUSE	4-BED/6-PERSON HOUSE	4-BED/7-PERSON HOUSE	1-BED/2-PERSON FLAT	2-BED/3-PERSON WHEELCHAIR FLAT
HOUSES					COTTAGE-FLATS	
PASSIVHAUS			NET-ZERO			

# HOUSES & MATERIAL

The development has been designed to look appealing and will be energy efficient, using air source heat pumps in place of gas. Homes will feature spacious living areas, generous natural lighting, triple glazed windows, built in wardrobes, high levels of storage space, and ground floor double bedrooms to aid adaptability.



CONCRETE TILE



BRICK TYPE A

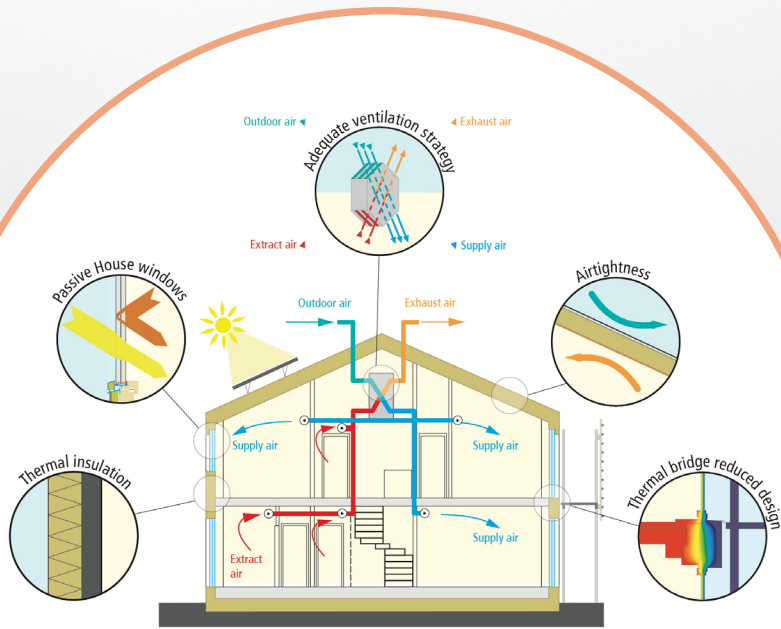


BRICK TYPE B



PRECAST CILLS

A material palette of two complimentary facing bricks is proposed, elevated by elements of brick detailing.



# 5 Principles of Passive House

Project Partners...

