

VALE of LEVEN WIND FARM

12th September 2022



Presentation to Kilmaronock Community Council



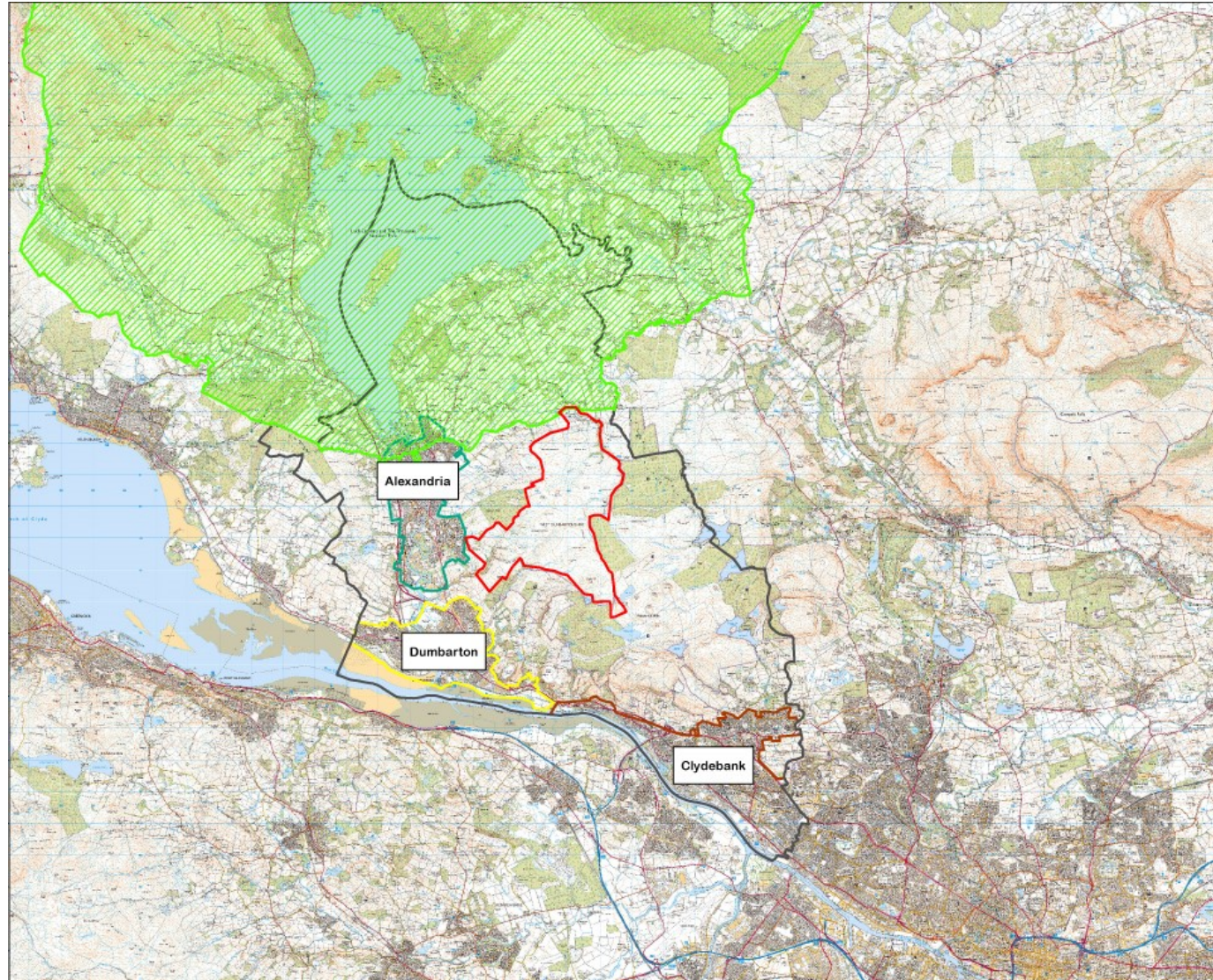
Coriolis Energy & ESB

- Coriolis
 - Experience of 17 consented wind farms, over 500MW capacity
 - Large presence in Scotland
 - ECU experience
- ESB
 - Ireland's premier energy company
 - 450MW of operating wind farms throughout UK
- Partnership
 - Established 2015
 - Progressing approx. 1 GW of schemes

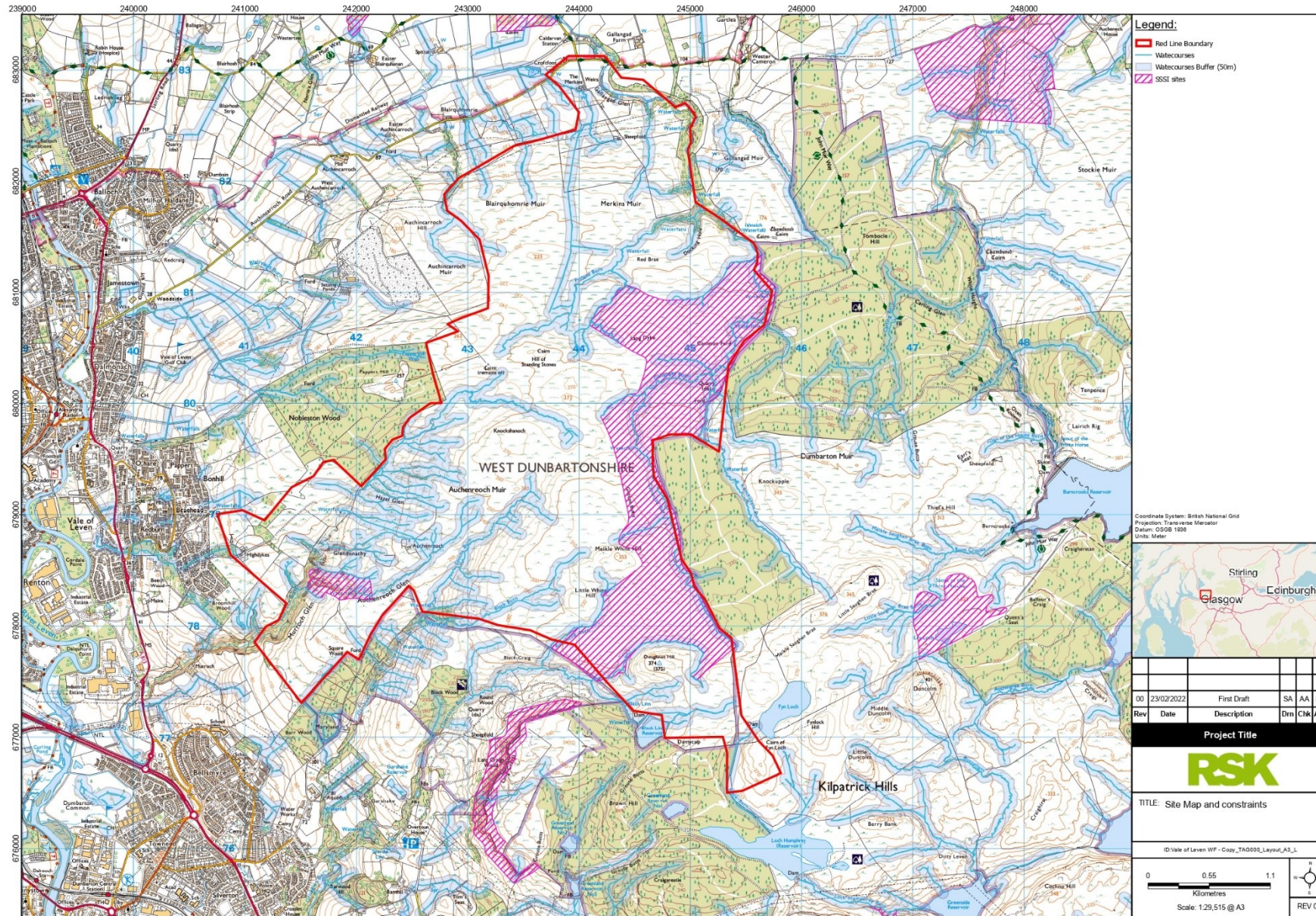


The Project – Location and surroundings

- Merkins Farm
- 2km northeast of Bonhill
- KGV Docks in Glasgow
- Access via A813 via Murroch Farm
- Encompasses part of previous Merkins app – refused 2013



The Project – Developable Area



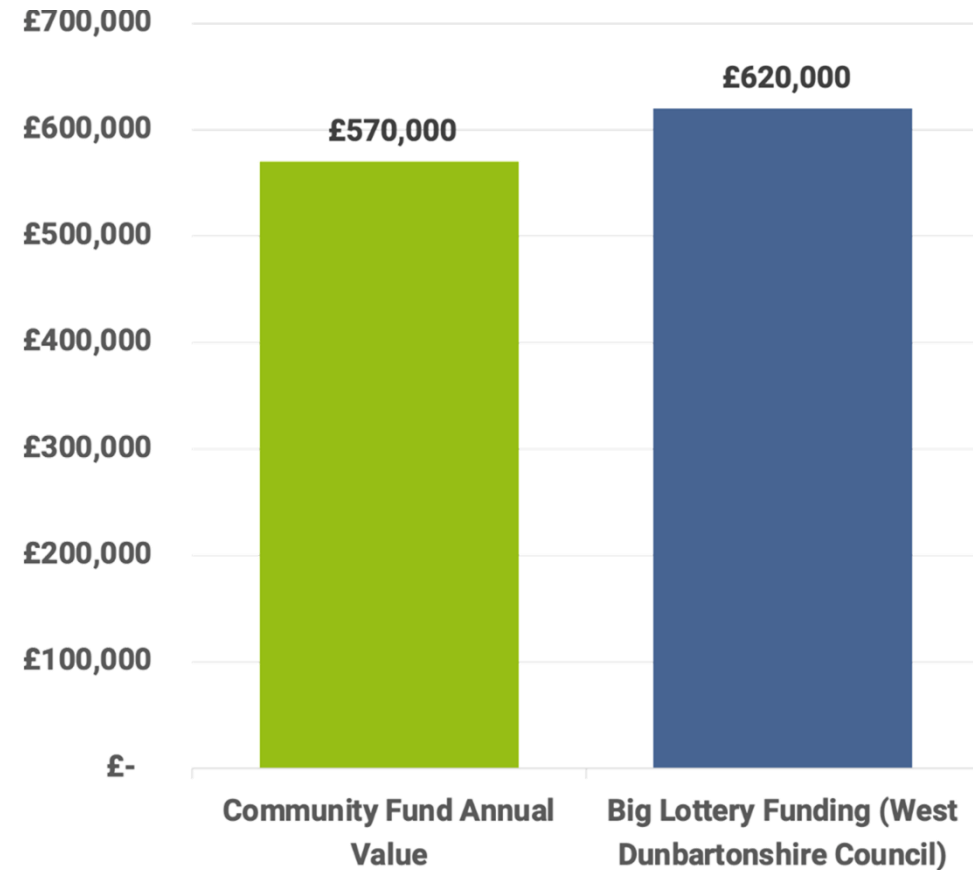
Map data © OpenStreetMap contributors, Microsoft, Esri, Community Maps contributors, Map layer by Esri, National Geographic, Esri, Garmin, HERE, UNEP-WCMC, USGS, NASA, ESA, METI, NRCAN, GEBCO, NOAA, iNaturalist P.Cop

Programme

- Kick off/pre-app Meetings Q1/Q2 2022
- Scoping April 2022
- Surveys Ongoing
- Public consultation Q3 & Q4 2022
- Submission Q1 2023
- Determination 2025/26*
- Commence Construction Q4 2027
- Operation Q2 2029

The Project – Community Benefits

- Local communities
 - In line with Scottish Govt/LES Guidelines of £5,000 per MW/yr
 - Significant funding opportunity for communities, in line with recent allocation from Big Lottery Fund for West Dunbartonshire
 - opportunity to use wind farm funding to leverage larger strategic projects
 - Working with existing trusts/management bodies to identify strategic priorities of communities to maximise impact of funding
- Shared ownership
 - Scottish Government's Good Practice Principles for Shared Ownership of Onshore Renewable Energy Developments

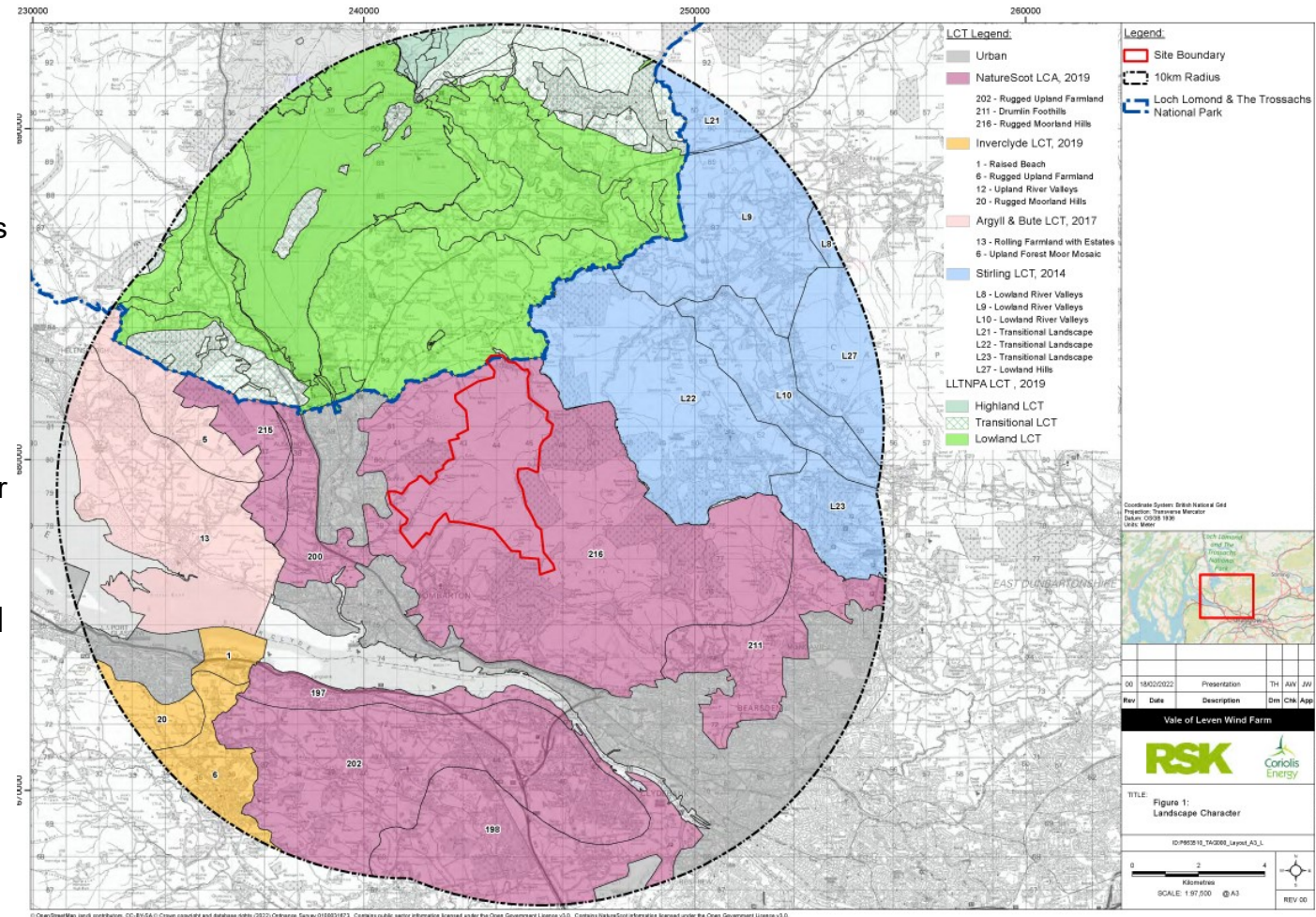


Key Aspects – Socio-Economics

- An economic opportunity during construction
- Investment of **£20 – 30 million** in civil engineering and construction contracts
- Main opportunities for West Dunbartonshire companies in:
 - Construction trades, sub-contracting;
 - Suppliers to construction trades;
 - Accommodation;
 - Security and site services; and
 - Environmental services.
- Ongoing opportunities during operational lifetime of wind farm.
- Annual spend of **£2.5 – 3.5 million**. Main opportunities in WD
 - Site maintenance;
 - Habitat management
- Coriolis will work with Tier 1 contractors to identify opportunities to maximise local economic content
- Member of Dunbartonshire Chamber of Commerce
- Opportunities for Power Purchase Agreements to support Net-Zero ambitions of major employers in West Dunbartonshire

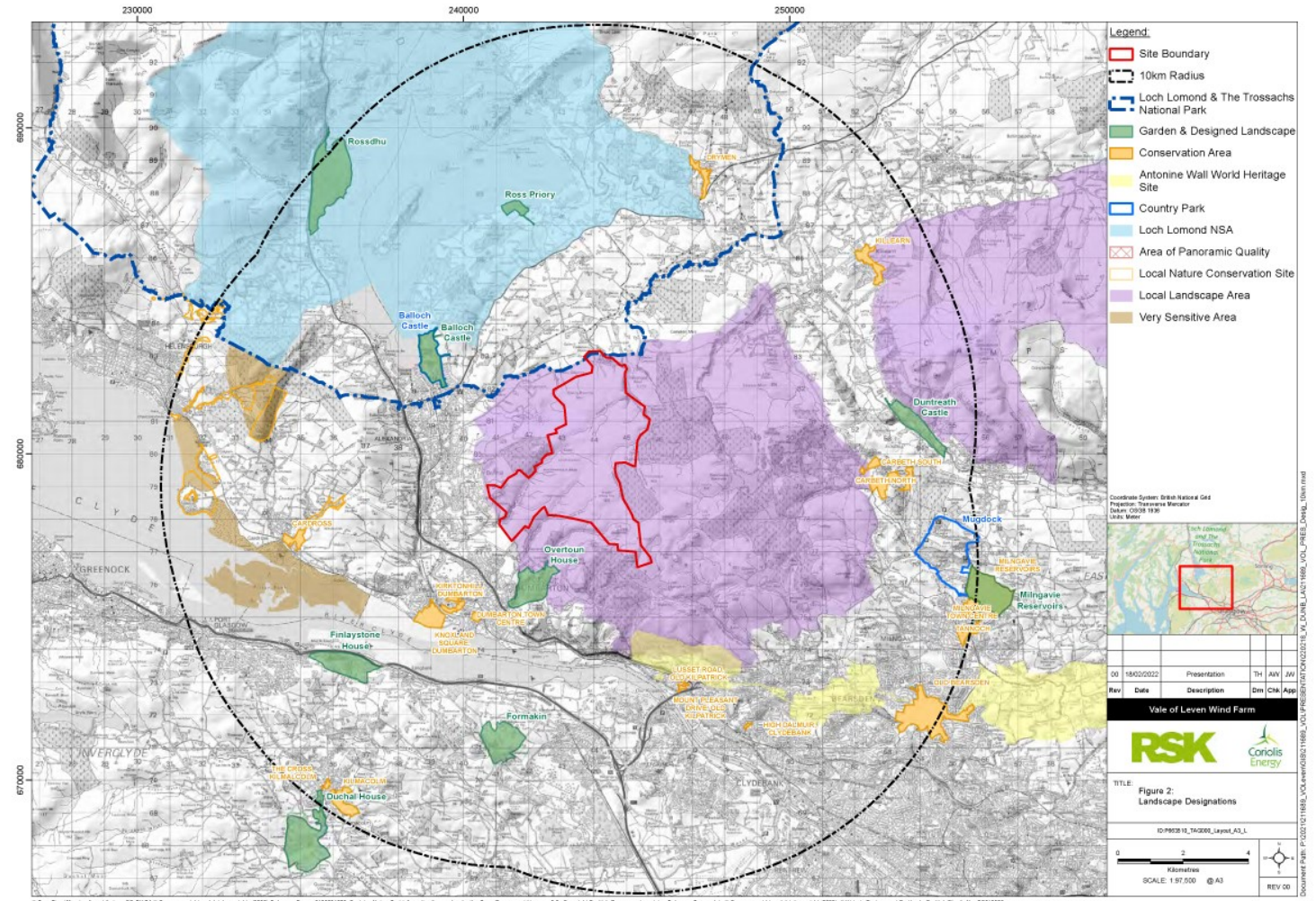
Key Aspects – Landscape and Visual Considerations

- Site is located within the Rugged Moorland Hills LCT, as identified by NatureScot (2019)
 - Large-scale simple landscape
 - Extensive man-made reservoirs and smaller natural lochs
 - Undeveloped skylines and striking views to the Glasgow conurbation
 - Important backdrop to neighbouring settled landscapes, creating a unique sense of place
 - Skylines are generally simple and uninterrupted, with the skyline of the southern ridge an important feature in wider views
- The design will need to achieve a balance between the role of the LCT as a backdrop to heavily settled areas and interaction with the remotest and 'wildest' parts of the Kilpatrick Hills
- LVIA will include a detailed evaluation of landscape character



Key Aspects – Landscape and Visual Considerations

- The site is not covered by any national landscape-related planning designations
- There are Nationally important designations within the 10km radius
 - Loch Lomond & Trossachs National Park
 - Loch Lomond National Scenic Area
 - Gardens & Designed Landscapes – 8 within a 10km radius
 - Antonine Wall World Heritage Site
- Regionally important designations:
 - WDC Kilpatrick Hills Local Landscape Area – the site is located within the LLA;
 - Conservation Areas in Dumbarton and Cardross



Thank-you!
Questions?

james.baird@coriolis-energy.com

sam.mcmillan@mcmillan.scot

www.valeoflevenwindfarm.com

