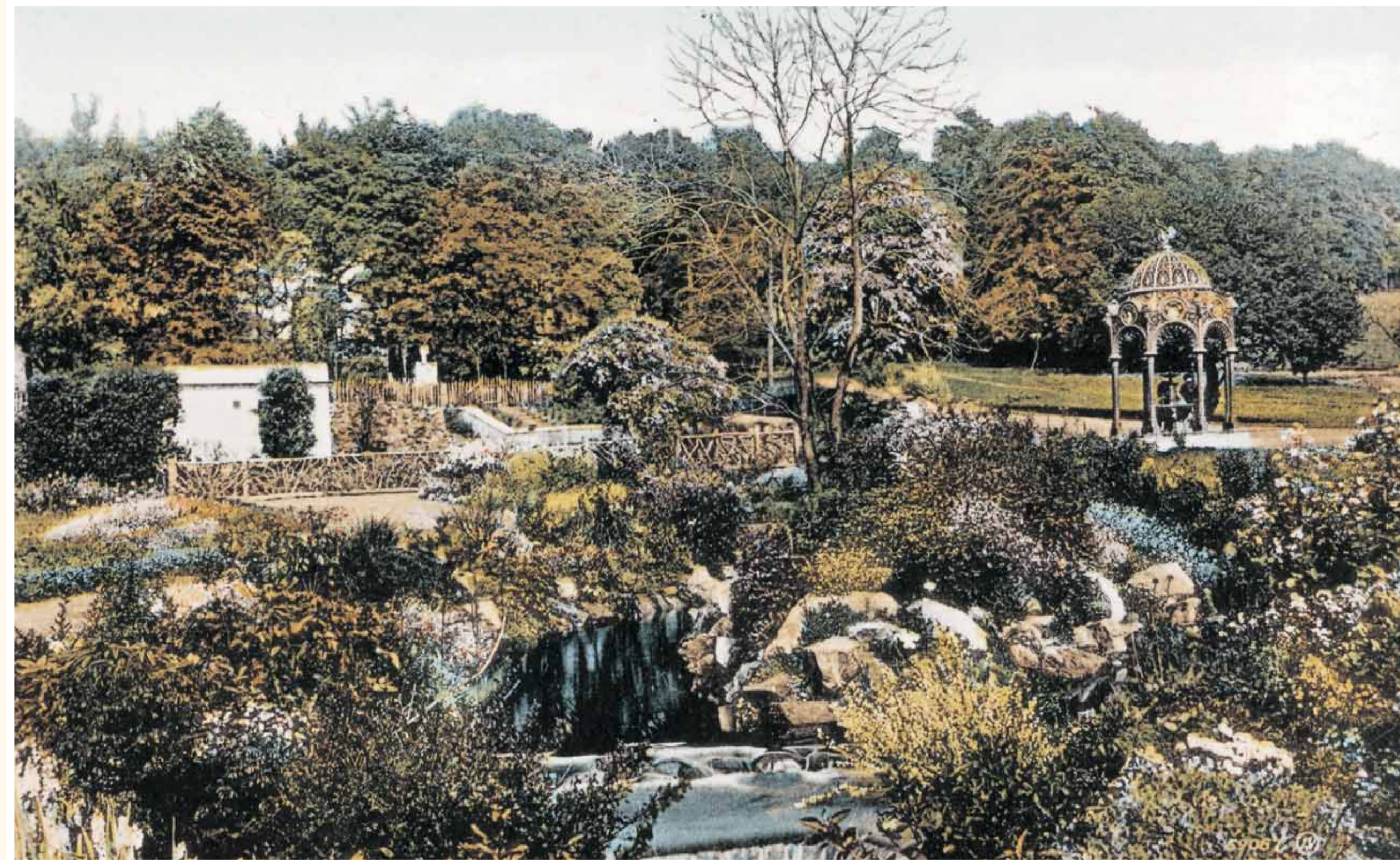


Dalmuir Park

The Fountain



The Fountain was installed in Dalmuir Park in 1907 as a gift from an ex-Provost, Samuel Leckie. It was built in the McFarlane's Saracen Foundry in Possilpark, Glasgow.

The Coat of Arms of the Burgh of Clydebank is one of several images high on the Fountain. The other 'heads' of Lions, Gryphons, Owls and the Eagle were typical features of ornate ironwork made in the early 20th century.



The gardens adjacent to the Fountain were laid out in the Edwardian rock garden style typical of the period as the Park developed after 1910. The Fountain and gardens are focal points of the annual Dalmuir Park illuminations, established as part of the victory celebrations in 1945. A small pool, 'The Lily Pond', was a centre of attraction with illuminated frogs and other creatures.



The Ladies' Shelter stood to the east of the Fountain further up the hill, this was demolished in the 1980's.

The driveway leading up the hill was built to link this low area with Dalmuir House, which was owned by Richard Collins whose family started the Paper Mill here in 1747.


KNOW THE CODE BEFORE YOU GO
www.outdooraccess-scotland.com

Enjoy Scotland's outdoors responsibly

- take responsibility for your own actions
- respect the interests of other people
- care for the environment.





Security/ Helpline Greenspace Section:
 Ranger's Office: 0141 952 6074
 Greenspace Enquiries: 01389 772059
 Out of Hours: 0800 1971004
www.west-dunbarton.gov.uk
 email: wdc.greenspace@west-dunbarton.gov.uk

